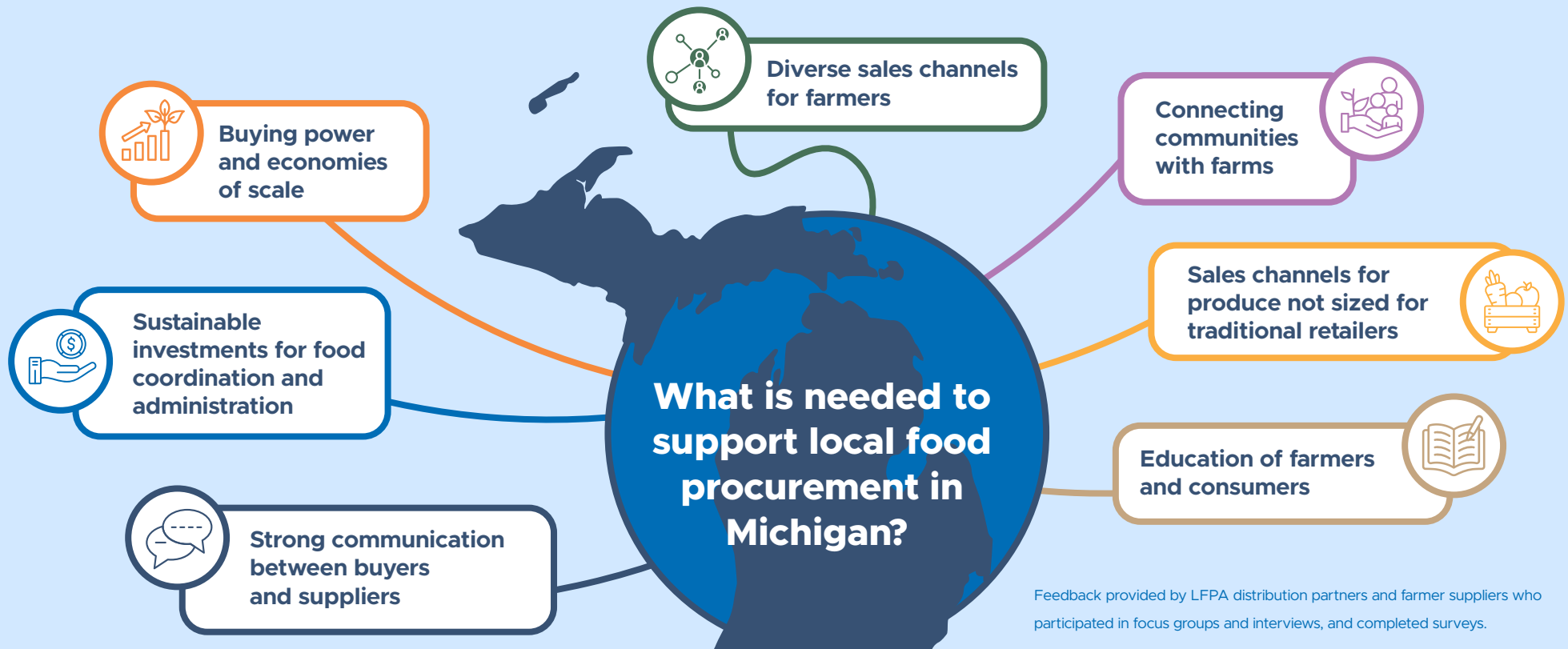


# Lessons Learned from the Michigan Local Food Purchase Assistance Program

The Michigan Department of Education (MDE) coordinates the USDA Local Food Purchase Assistance (LFPA) program from October 2022 through December 2026 to maintain and improve the resiliency in the food and farm supply chain. The program demonstrates that investments in local supply chains can provide beneficial impacts for Michigan farmers and communities.



“Targeted investments in local food systems can produce measurable impacts for farmers and communities.”

– LFPA Michigan Evaluation Report



“The Local Food Purchase Assistance program was a game changer on so many levels. Combining support for small family farms while increasing access and all while creating local networks that worked together locally, regionally, and nationally.”

– Findings of the 2025 National Food Hub Survey



LFPA proudly supported by USDA. LFPA concludes December 2026. All information in this document represents data during active LFPA programming.

Thanks to the seven LFPA food distribution partners: Eastern Market, Flint Fresh, Food Bank Council of Michigan, Kalamazoo Valley Community College/ValleyHUB, Mid Michigan Community Action, Thumb Food Policy Council, and West Michigan Food Processing Association and evaluation partner, Michigan State University Center for Regional Food Systems.

# Key Outcomes from Targeted Investments in Local Food

## Sales tripled for food hubs

across the country during the LFPA funding period (2021-2025), according to the findings of the *2025 National Food Hub Survey*.

## New market opportunities

for Michigan's family farms.

## Reduced food waste

by funding purchases of produce seconds.

## Strengthened relationships

between consumers and local farms.

## Increased sales to schools

of fresh fruits, vegetables, and dry beans through 10 Cents a Meal for Michigan's Kids and Farms each year since 2016.



“The flexible nature of LFPA programming has encouraged creative distribution models, providing food where needed most while increasing access to a more diverse variety of products than previously available to those who rely on food assistance programs.”

– Tom Priest, Michigan Department of Education



“The growth in the business operations of our partner urban farms has been tremendous. Most of the farms are looking forward to increased output, but significant improvement has been shown in packaging, invoicing, and logistics as well.”

– MI LFPA distribution partner



“Losing the program will impact my bottom line. It will affect hundreds of people in our community.”

MI LFPA farmer supplier, when speaking on the loss of LFPA funding in Michigan

Scan the QR code to see stories from the field



LFPA proudly supported by USDA. LFPA concludes December 2026.

All information in this document represents data during active LFPA programming.

Thanks to the seven LFPA food distribution partners: Eastern Market, Flint Fresh, Food Bank Council of Michigan, Kalamazoo Valley Community College/ValleyHUB, Mid Michigan Community Action, Thumb Food Policy Council, and West Michigan Food Processing Association and evaluation partner, Michigan State University Center for Regional Food Systems.